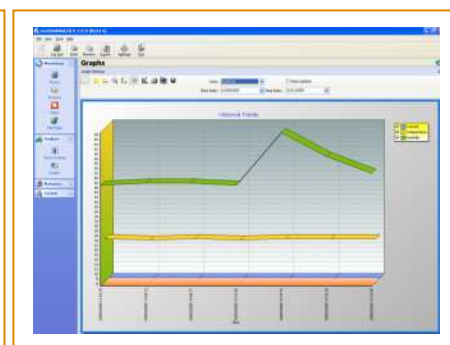
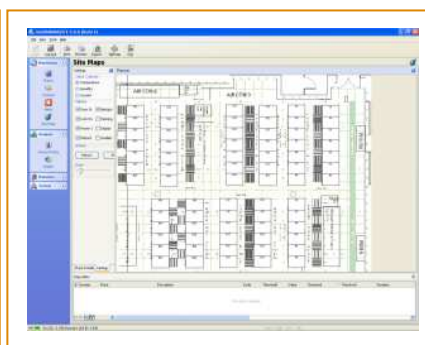
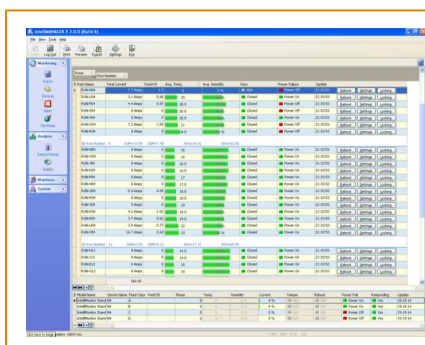


IntelliServer is the **central software engine** of an IntelliSystem. It is built on a well-proven, ultra robust database engine. Like all IntelliData software, IntelliServer is completely developed in-house, requiring no third party licence fee and allowing IntelliData Systems to react quickly in modifying the software to specific client requirements.

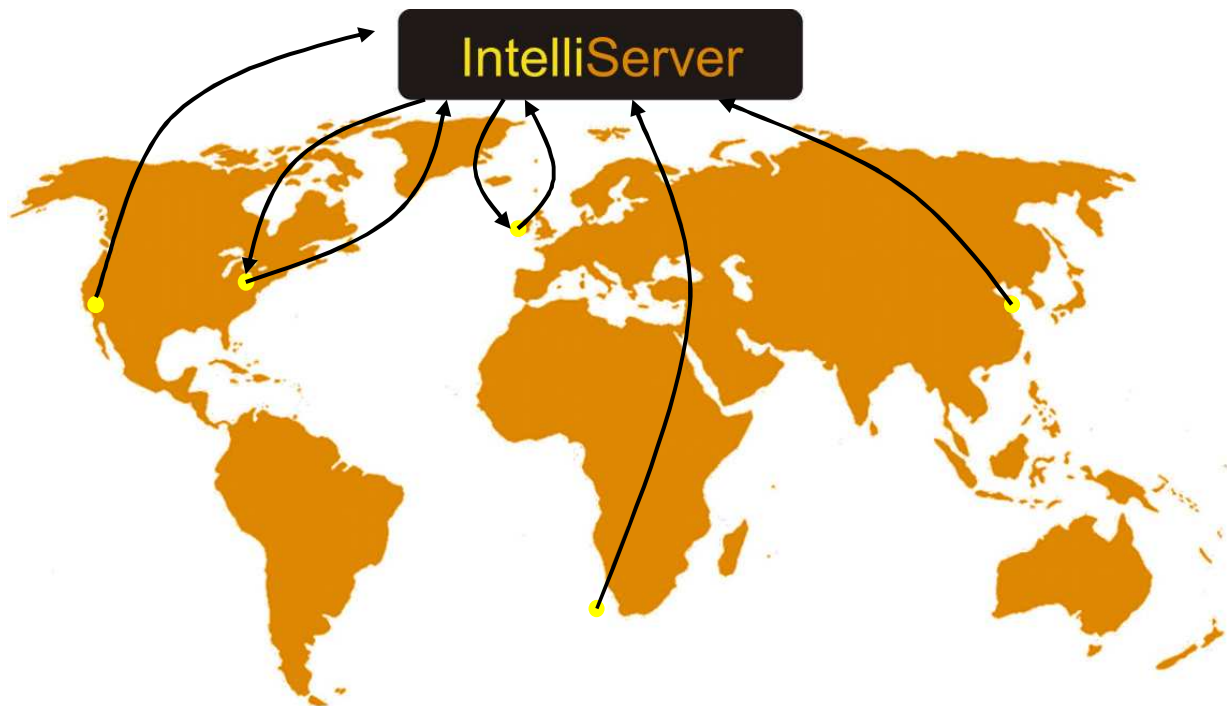
Most users are unaware of the presence of IntelliServer at the heart of the system as the **IntelliManager** application provides a user-friendly graphical interface that hides its sophistication. However, Power Users are easily able to engineer their own user-interface solutions, or integrate IntelliServer with 3rd party front-ends using the support tools built into IntelliServer.

Features

- Gathers data from multiple IntelliPollers at multiple locations
- Integrates power, environmental and security monitoring
- Stores a complete history of power and environmental changes
- Supplies data to multiple IntelliManager clients throughout the enterprise
- Generates user-specified alerts via SNMP traps
- Generates simple reports in xls format
- Supports IntelliVU for sophisticated, custom reports
- Exports data via ODBC and SOAP to third party clients
- Communicates with clients via secure, encrypted links
- Traps, timestamps and logs every event
- Efficiently records system history, minimising disc usage
- Supplied complete with management and maintenance tools



Global view



The IntelliData Systems architecture allows users to see as much of the global picture as they need to. The database filters allow a manager in London to see the state of every cabinet in every data centre in every region, or just the European ones, or just those with HAL blade servers. The system can be engineered so that monitoring and control is passed from time zone to time zone, following the sun.

One IntelliServer can monitor tens of thousands of devices installed in dozens of data centers around the world. Alternatively with the same licence, the user may install multiple instances to ensure compartmentalisation.

System Requirements

IntelliServer will run on any machine (or virtual machine) with a Windows® 2k3 or XP operating system (or later), a 1GHz processor, 1Gbyte RAM and a 30 Gbyte hard drive. The better the machine (eg more RAM, more processors), the better the user experience will be. It is our experience in particular that virtual machines are not suitable for installations with more than about 300 cabinets. Typically 1000 devices use 0.5Gbyte hard disc space for every 6 months of recorded history.