



# Cabinet Security



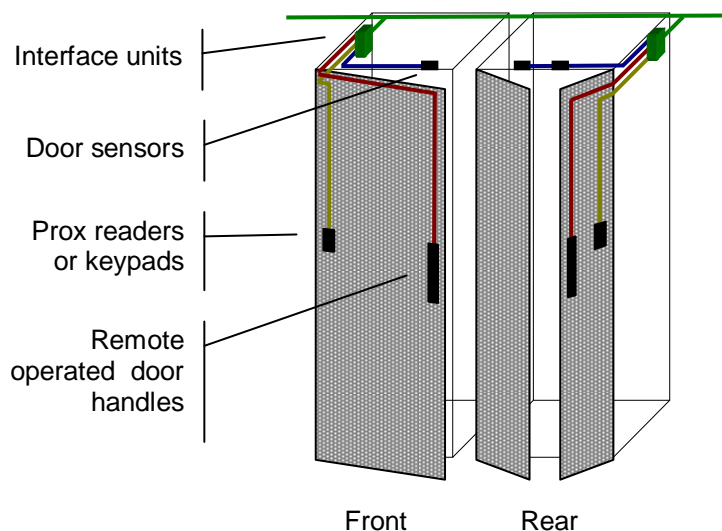
- Integrated with power and environmental monitoring system
- Control of most types of cabinet door locks
- Prox card, magnetic swipe or keypad PIN access control
- Tracks who opens which cabs when.
- Very low network overhead – approx one IP address per fifty cabs

## Integration

The IntelliData cabinet security system integrates monitoring and control of cabinet access into the same structure used for power and environmental monitoring, simplifying installation and reducing cost.

In its simplest configuration, the IntelliServer simply monitors and records door openings, allowing users to correlate other events such as temperature changes or service loss door openings.

In a fuller configuration, each cabinet may be fitted with an entry system and electronic locks that can either be opened under central control, or by time limited card or keypad access as part of a complete change request system.



## Access Control

There is a choice of prox card readers, magnetic swipe and keypads available and the system will support a reader/keypad per door; a reader/keypad per cabinet (controlling both doors) or a reader/keypad per group of cabinets. Most door lock manufacturers offer a back-up method of access control for use in the event of a system failure. If a cabinet is opened using the back-up method, or any other method that bypasses the security system, IntelliServer automatically generates an alert (via an SNMP trap, e-mail or other methods).



The system allows a central controller to unlock all cabinet doors simultaneously.

— Intelli Access Interface Unit

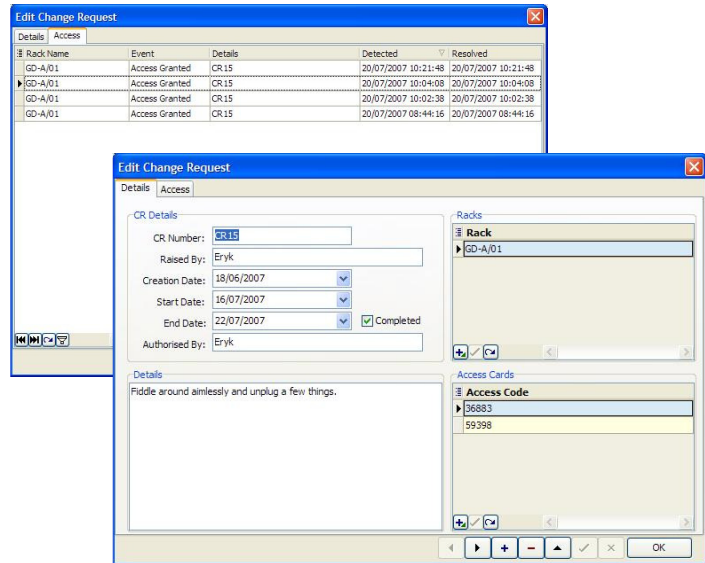
## Software

The security control and logging pages are included within the IntelliManager software. All access attempts, successful or otherwise, are recorded.

The Maintenance access page allows entry to specific cabinets at specific times. Details of the work can either be recorded directly in the form, or the form can link to an external change request document.

A management overview page allows an administrator to see which personnel have cabinet access at any time.

Access control is always routed through IntelliServer. Access codes and valid card details are never stored at the cabinet. This system allows inert prox cards to be kept by secretarial or reception staff at a remote location that will only be activated once the designated user has confirmed receipt.



## Door Handles

Each cabinet manufacturer offers a variety of door handles, each with a different mode of operation. The Dirak handle pictured to the left springs open when remotely released, whereas the Rittal handle requires that the user press a button to release the handle once the lock is disengaged. Some handle types require that the solenoid is continuously powered, others require a short pulse. Most systems provide a 'handle secure', a 'locked' tally, or both. IntelliData Systems provides control and monitoring for all these variations.

In most instances, power for the locking system is provided from the IntelliPoller, but some combinations of handle and prox card reader may require that a local auxiliary power source is used so that the ability to open all doors simultaneously is maintained.